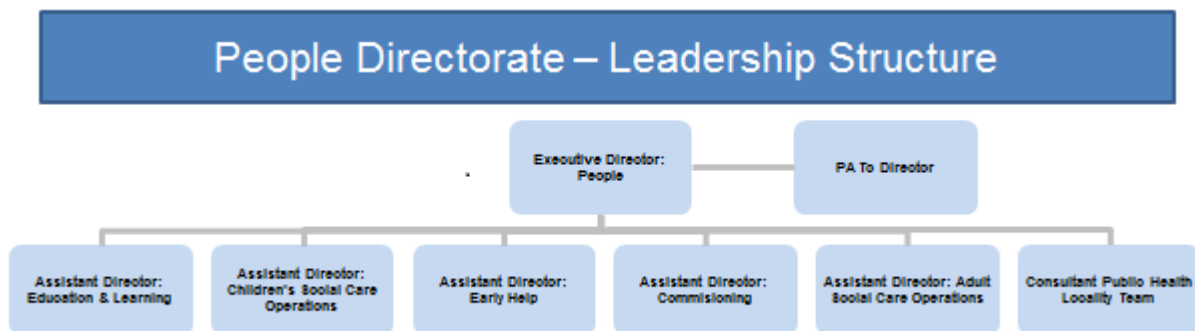


Assistant Director – Children’s Social Care Operations

About the Department

The role is positioned within the People Directorate which includes the following:

- Children’s Social Care
- Education and Learning
- Adult Social Care
- Help and Communities
- Commissioning
- Public Health



The vision of the People Directorate is to provide the best possible opportunities for our young people by providing effective support and challenge to our schools and to keep everyone, whatever their age, connected to their community, family and friends and able to access the right opportunities they need to thrive. With real outcomes for real people at the heart of every service we provide, our goal is to keep more families safely together and, by providing the right support at the right time, enable people to live as independently and well as possible, for as long as possible.

Location

This position is based at Time Square, an open plan office in Bracknell town centre.

Work Style / Parking

Your work style is "Home-Flex". This is also a primarily deskbound role but it could equally be done for part of the week from home.

For a 5:3 desk ratio this amounts to 40% of time away from a desk in the office – this may be working at home or another location or attending meetings or other activities away from a desk.

Further details of the workstyles can be found in the Council's Flexible Working Policy.

As Assistant Director you will need to balance visibility and accessibility whilst modelling agile working.

Staff Benefits

Please visit <https://www.bracknell-forest.gov.uk/jobs/working-council> Please note Assistant Directors are not able to take part in the buying and selling annual leave programme.

Values and Behaviours

The council shares a set of values that we try to demonstrate in all that we do.

We are **Forward thinking** – we innovate, we plan, we focus on delivery.

We are **Open-minded** – we learn from what we do and are open to new ways of doing things.

We are **Respectful** of others – and treat them as we would wish to be treated ourselves.

We **Work together** as one Council, and we work together with partners and customers.

We are **Adaptable** - we embrace change, and we are flexible.

We are **Resilient** - we bounce back from setbacks and we find a way to carry on.

We are **Determined** – we have a “can do” attitude.

We show that we have these values in what we do, and how we do it.

It's important that we can learn and change; that we can find ways to solve problems; that we do the right things in the most cost-effective way; that we help to make things happen; that we are business-like in understanding risk, change and affordability; that we work well with others in a positive way.

If this sounds like the sort of people you'd like to work with, then we think we would like to work with you!

Terms and Conditions

The post will be offered as a permanent appointment subject to three month's notice on either side.

Offers of appointment are subject to satisfactory references, medical clearance and if applicable to the post, a Disclosure & Barring Service check. All employees will also be required to undertake a probationary period of 6 months. Appointment onto the permanent staff will be subject to the successful completion of this probationary period.

Salary

The salary will be within the range £88k to £103k per annum the starting salary will depend on experience. Incremental progression through the grade will be performance related.

Car Allowance

This post carries a Casual Car User Allowance. Business miles are claimed at 45p per mile for the first 8,500 miles and 25p per mile thereafter.

Working Hours

As an Assistant Director, your hours of work are as required. The salary is inclusive and in complete recompense for hours worked.

Holidays

The annual holiday entitlement is 27 days plus bank holidays.

Annual holiday entitlement increases with length of service (5 extra days after 3 years continuous Local Government service).

Pension

Bracknell Forest Council operates the Local Government Pension Scheme, which is a Career Average Re-evaluated Earnings (CARE) scheme, open to everyone up to the age of 75.

Relocation

Will you have to move house to work for us? A relocation scheme is available if you are moving from over 40 miles away to within 15 miles of your workplace. This includes a lodging or travel allowance plus assistance with moving expenses. In addition, a monthly allowance can be paid for 4 years to cover regional differences in house prices. Available for both those who have yet to take their first step on the property ladder and for existing homeowners.

If you attend an interview, please mention your interest in our relocation package.

Politically Sensitive

This post is a politically sensitive post, ie politically restricted under The Local Democracy, Economic Development and Construction Act 2009.

This means there are certain restrictions to observe relating to canvassing for political parties or taking up a political office- although you may still become a Councillor in a Town or Parish Council.

Employees who are listed as “politically sensitive” are limited as follows:

- Postholders are disqualified from being Members of any County, Borough or District Council including Bracknell Forest.
- Postholders are disqualified from being a Member of Parliament or of the European Parliament.
- Postholders are restricted in terms of public political activity (eg open campaigning or canvassing in elections, publishing political articles).

Further details are available on request. Please feel free to discuss this at interview.

Working with Children and Adults at Risk

Bracknell Forest Council is committed to safeguarding and promoting the welfare of children and young people/adults at risk and expects all employees, workers and volunteers to share this commitment. We will ensure that all our recruitment and selection practices reflect this commitment.

This position requires an Enhanced DBS check (formerly known as a CRB disclosure) because it involves contact with (or access to data concerning) children/young people/adults at risk. On your application form, you will need to tell us about any spent convictions, cautions, reprimands or warnings which may later appear on your DBS Certificate.

To find out more about the application process for working with children, young people and adults at risk visit <https://www.bracknell-forest.gov.uk/applying-job/applications-work-children-young-people-or-adults-risk>

References

Please give the names and addresses of two people who will provide a reference. At least one should be from your current/last employer, but references from school/colleges are also acceptable. If you give a home address for a referee, please indicate which employer or school/college they represent.

For posts in contact with children/young people or adults at risk employment references will not be accepted from relatives or people writing solely in the capacity of friends. However, your referees may include someone you know with standing in the community i.e. a teacher, vicar etc

Working in the UK

You must be entitled to work in the UK before you can start work with us. If you have any doubt of your ability to work in the UK visit: <http://www.ukba.homeoffice.gov.uk/visas-immigration/working/>

Positive about people with a Disability



We are a Disability Symbol User and as such have made a commitment to guarantee an interview to all applicants with a disability who meet the essential criteria of the person specification.

To help us with our commitment to this guarantee, please indicate if you have a disability on your application form.

Equal Opportunities

We are an equal opportunities employer and are committed to providing equality of opportunity to all. Our aim is to treat all employees and prospective employees with integrity, respect and consideration.

We aim to ensure that individuals are recruited, selected, trained and promoted on the basis of ability, job requirements, skills, aptitudes and other objective criteria. In this respect we will ensure that no job applicant or employee receives less favourable treatment on the grounds of race, colour, nationality, ethnic or national origin, sex, sexual orientation, religion or belief, age, marital status or disability, or is disadvantaged by conditions or requirements which are not covered by legislation or existing codes of practice.

Medical Questionnaire

You may be asked about your physical ability to perform the job during interview. As a condition of the Offer of Employment, the successful applicant will be asked to complete an Occupational Health questionnaire from which our Occupational Health Advisor will assess your medical suitability to do the job. You may be required to attend a medical examination.